



# WEST ESSEX REGIONAL MIDDLE SCHOOL

**GOOD MORNING KNIGHTS!**

Today is **Thursday, November 19th**

We are following a **D Day** Schedule

*Your day starts with Block 1, Period 2. Start time is 7:42*

**PLEASE STAND AND JOIN ME IN RECITING THE PLEDGE OF ALLEGIANCE**



**I pledge allegiance to the Flag of the United States of America and to the Republic for which it stands, one nation under God, indivisible, with liberty and justice for all.**

## Announcements

# NOVEMBER 19TH

**WE STRONG  
DONATIONS  
ENDING 11/23**

### D Day Schedule

BLOCK	TIME	PERIOD
1	7:42-8:27	2
2	8:32-9:13	3
3	9:18-9:59	4
4	10:04-10:45	6
5	10:50-11:31	7
6	11:36-12:17	8

### Events this Week

11/16-11/23  
W.E. Strong Donation

11/19 Cohort Blue  
Glee Club  
Jazz Club  
String Ensemble  
Knightly News  
Student Council

11/20 Cohort Green

11/23 Deadline for Gratitude  
Tree Kit Order



7th Grade Homeroom [Link](#)  
[Glee Club Link](#) Code: aqytpg5  
[String Ensemble Link](#) Code: gt4jpia

8th Grade Homeroom [Link](#)  
[Jazz Club Link](#) Code: qg4ksja  
[Knightly News Link](#) Code: kwuctm2

# THURSDAY, NOVEMBER 19TH

## GLEE CLUB

Code: aqytpg5

## JAZZ CLUB

Code: qg4ksja

## STRING ENSEMBLE

Code: gt4jpia

## KNIGHTLY NEWS

Code: kwuctm2



[Glee Club Link](#)  
[String Ensemble Link](#)

[Jazz Club Link](#)  
[Knightly News Link](#)

# WE STRONG

West Essex Clubs are uniting to collect items to help the people in our community this Holiday Season. If you are able to donate any of the following items, it would be greatly appreciated.

Nonperishable food - canned & boxed items  
New socks in all sizes  
New gloves in all sizes

W.E. will be collecting these items outside in the front of the Middle School overhang near the large gymnasium/auditorium signage from November 16th-23rd



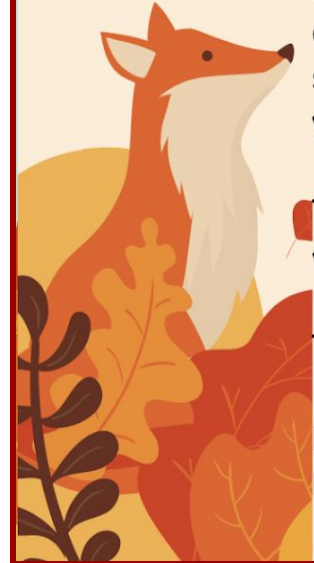
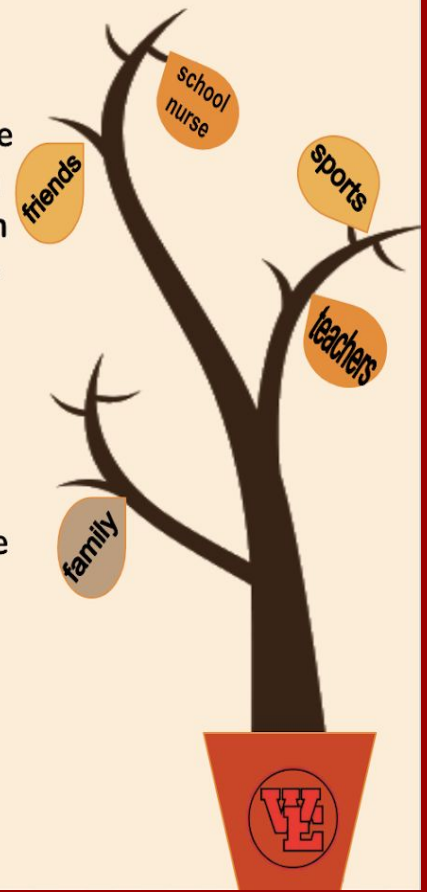
# GRATITUDE TREE

The Library has a perfect activity for you just in time for this Thanksgiving break. If you are interested in some mindful fun & want a nice creative outlet, then order one of these Thanksgiving Gratitude Tree kits from the Library. All of the supplies are included except for the branch. You can order & pick up the supplies in the Library or if you are 100% remote, you can arrange for a pickup or delivery.

This is something you can do by yourself or at home with family.

The order deadline is Monday, November 23rd.

Please click the link below to order from Mrs. Spinella in the library.



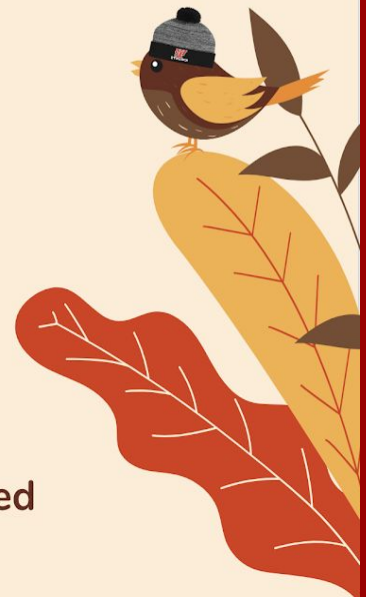
Gratitude Tree [Order Form](#)

# WEMS SCHOOL STORE



The WEMS School store is open until November 30th.

Get your orders in!! All orders will be shipped directly to your house



WEMS School Store Link [Click Here](#)

**SMALL/MEDIUM WEST ESSEX MASKS ARE  
STILL AVAILABLE FOR PURCHASE IN THE  
MAIN OFFICE.**

**\$4.00 EACH**

**EXACT CHANGE APPRECIATED**



Please see Mrs. D'Anton in the Main Office or email her at [vdanton@westex.org](mailto:vdanton@westex.org)

# STEM

**SCIENCE**



**TECHNOLOGY**



**ENGINEERING**



**MATHEMATICS**



Our Science, Technology, Engineering, & Mathematics (STEM) teacher, Mrs. Purciello, is producing a monthly newsletter. Please read the STEM SPOT October Edition.

STEM SPOT October Edition [Click Here](#)  
Information about STEM, please email [Mrs. Purciello](#)

# PICTURE RETAKES



## WEEK OF DECEMBER 1ST

During the week of December 1st, Lifetouch will return to W.E. Middle School for picture retakes.

Please be sure to read next week's newsletter for details.



# FRIDAY

November 20th

# A DAY

7:42 start time

# COHORT GREEN





HAVE

A GREAT DAY